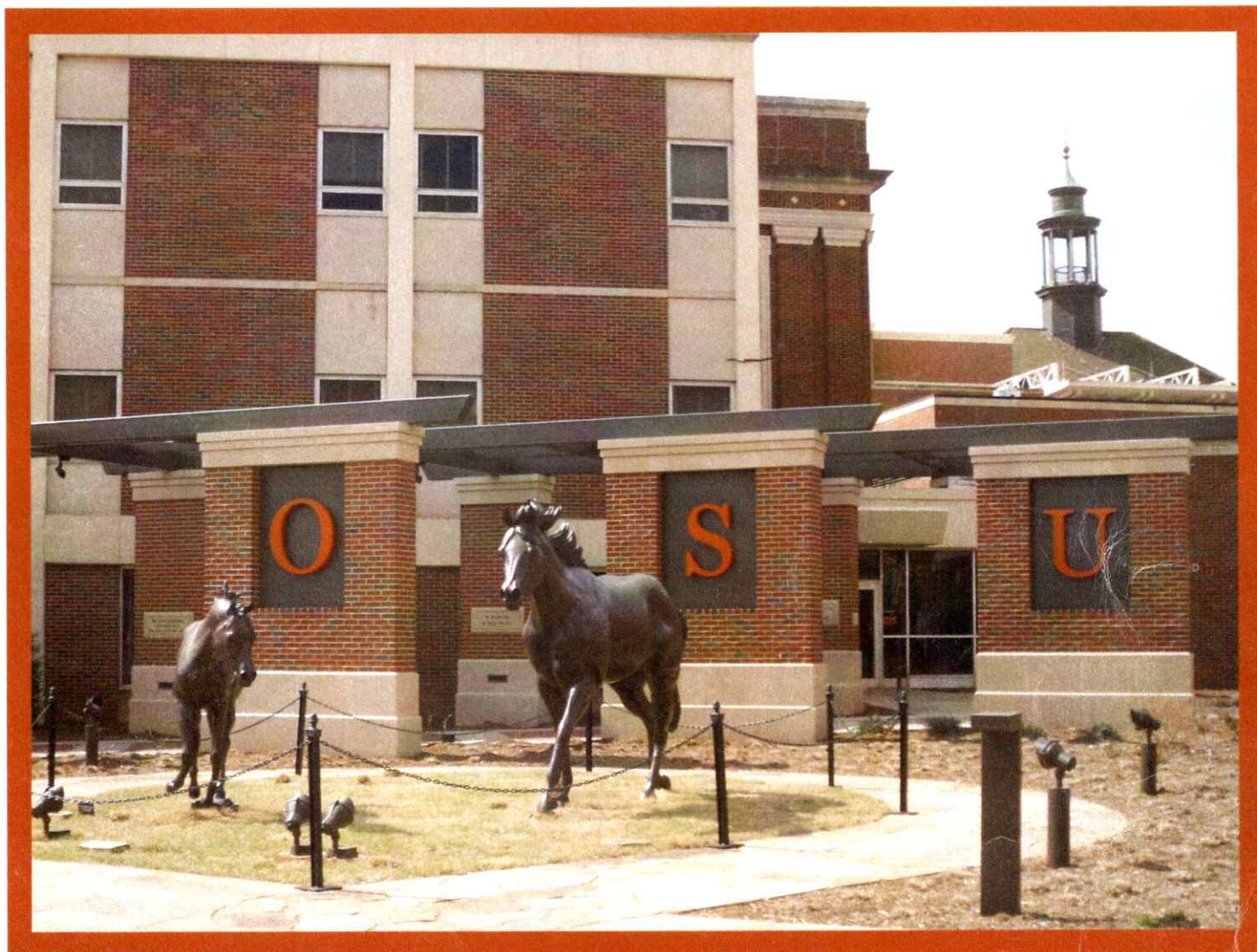




2017 Directory



OSU Emeriti Association

102 ConocoPhillips Alumni Center

Oklahoma State University

Stillwater, OK 74078

405.744.5263

emeriti@okstate.edu

**OKLAHOMA STATE UNIVERSITY
EMERITI ASSOCIATION**

**DIRECTORY
2017**

**ConocoPhillips Alumni Center, Suite 102
Oklahoma State University, Stillwater, OK 74078
Phone: 405-744-5263
Email: emeriti@okstate.edu
Website: <http://emeriti.okstate.edu>**

CONTENTS

	PAGE
2017 Emeriti Council	2
Past Chairs/Presidents of the Association	3
Organizational Structure	4
Members Serving on University Standing Committees	5
Members Serving on Faculty Standing Committees	5
Representatives to Affiliated Organizations	5
Emeriti Contacts	5
General Information	6
Emeriti Benefits	7
Highlights of 2016	9
In Memoriam	11
Membership Roster Information	12
Membership Roster	13

2017 EMERITI COUNCIL

Executive Committee

President	Anne Matoy	372-1567
President-Elect	Sharon Nivens	377-5513
Vice-President for Activities	Dennis Bertholf	372-9420
Secretary	Tana Rutan	377-5596
Treasurer	Ron Elliott	743-0516
Immediate Past President	Russell Wright	377-1670

Members at Large

Doug Aichele	(2017) 334-9403	Kay W. Keys	(2018) 377-7486
Charles Leider	(2017) 269-2221	Kent Olson	(2018) 377-3772
Bob Wettemann	(2017) 624-0703	Clem Ward	(2018) 377-3884
	Jack Dillwith	(2019) 743-1514	
	Delores Willett	(2019) 624-1623	
	Althea Wright	(2019) 377-3770	

PAST CHAIRS OF THE ASSOCIATION

Robert Henrickson	1988 – '89
James Plaxico	1989 – '90
Harold Sare	1990 – '91
Robert Fite*	1991 – '92
Kyle Yates*	1992 – '93
Mary Frye	1993 – '94
Idella Lohmann*	1994 – '95
J.O. Grantham*	1995 – '96
A.B. Harrison*	1996 – '97
Dan Lingelbach*	1997 – '98

PAST PRESIDENTS OF THE ASSOCIATION

Don Holmes	1998 – '99
Audrey Eleanor Oaks*	1999 – '00
Roscoe Rouse*	2000 – '01
Esther Winterfeldt	2001 – '02
Larry Jones	2002 – '03
Ron Beer	2003 – '05
Kenneth McKinley	2006
Bob Swaim	2007
Larry Zirkle	2008
Russell Wright	2009
Margaret Scott	2010 – '11
David Lewis	2012
Dennis Bertholf	2013
Patrick Murphy*	2014*
Russell Wright	2015
Anne Matoy	2016

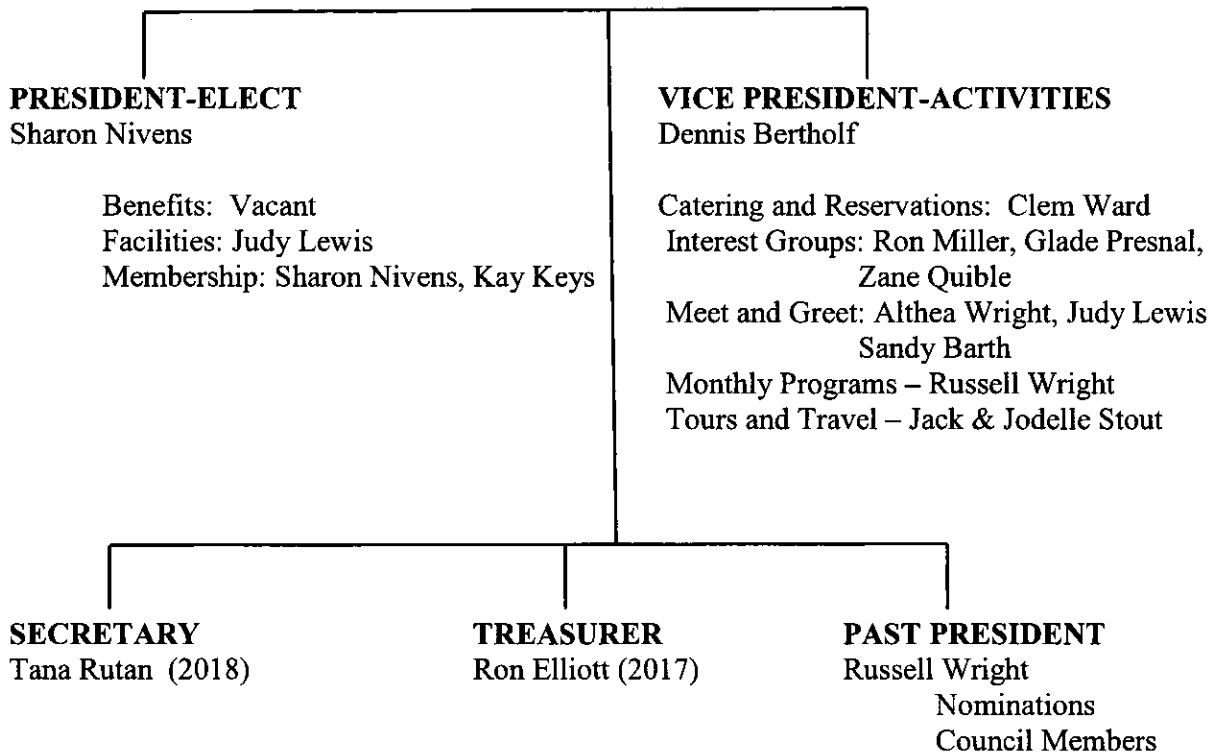
*deceased

2017 ORGANIZATIONAL STRUCTURE

PRESIDENT

Anne Matoy

Ambassadors/Alumni Relations: Russ Wright
 Communications: Vacant
 Finance: Ron Elliott, Anne Matoy, Sharon Nivens
 Constitution/By-Laws/Policies & Procedures (Ad Hoc):
 Andrea Arquitt, Clem Ward, Sharon Nivens,
 Jack Dillwith
 Financial Review (Ad Hoc): Kent Olson, Delores Willett
 Scholarship: Ron Elliott, Zane Quible, Clem Ward
 Historian: Kay Murphy



COUNCIL MEMBERS AT LARGE

Doug Aichele (2017)	Kay W. Keys (2018)
Charles Leider (2017)	Kent Olson (2018)
Bob Wettemann (2017)	Clem Ward (2018)
Jack Dillwith (2019)	
Delores Willett (2019)	
Althea Wright (2019)	

UNIVERSITY STANDING COMMITTEES

Athletic Council (ex-officio): Glade Presnal
Intellectual Property: Vacant

FACULTY STANDING COMMITTEES

Academic Standards and Policies: Kathryn Castle (5-31-19)
Athletics: Dennis Bertholf (5/31/19)
Budget: Andrea Arquitt (5/31/17)
Campus Facilities, Safety & Security: Chuck Leider (5/31/19)
Diversity Advisory Committee: Mimi Ward (5/31/19)
Faculty: Barbara Miller (5/31/19)
Learning Resources/Student Affairs: Kent Sampson (5/31/19)
Long-range Planning & Information Technology: John Kirkpatrick (5/31/19)
Research: David Lewis (5/31/19)
Retirement & Fringe Benefits: Bob Wettemann (5/31/18)

REPRESENTATIVES TO AFFILIATED ORGANIZATIONS

Osher Lifelong Learning Institute (OLLI) Board - Ed Arquitt

EMERITI CONTACTS

Ambassadors/Alumni Relations	Russ Wright
Archives/History	Kay Murphy
Catering & Reservations	Clem Ward
Constitution, Bylaws, Policies & Procedures	Andrea Arquitt, Clem Ward, Sharon Nivens, Jack Dillwith Vacant
Communications	Carol Olson
Courtesy	Sharon Nivens, Kay Keys
Directory	Judy Lewis
Facilities & Maintenance	Ron Elliott, Ann Matoy, Sharon Nivens
Finance	Kent Olson, Delores Willett
Financial Review	Ron Miller
Investment Club	Zane Quible
Making the Most of Retirement	Judy Lewis, Althea Wright
Meet and Greet	Sandy Barth
Membership	Sharon Nivens, Kay Keys
Name Tags	Russell & Betty Wright
NewsPress Liaison	Vacant
Nominations	Council Members
Programs	Russell Wright
Technology Interest Group	Glade Presnal
Tours and Travel	Jack & Jodelle Stout
Website	Zane Quible

GENERAL INFORMATION

MEMBERSHIP: Membership in the OSU Emeriti Association is open to all retired employees of OSU (faculty and staff), spouses of current or deceased Emeriti members, retired federal personnel associated with OSU, Board of Regents, and retirees from other A&M institutions. Other retirees with a significant relationship to OSU may become members upon approval of the Council.

DUES: Annual Membership dues are \$25.00 per person or \$35.00 per couple and are due and payable each year on January 1. Dues not received by March 1 may cause the member's name to be excluded from the annually-updated directory. Life Membership may be purchased for \$200.00 per person or \$250.00 per couple. Life membership does not expire and does not have to be renewed. Checks for annual dues and life membership should be made payable to the OSU Emeriti Association.

MEETINGS: No fewer than eight meetings of the Association are scheduled by the Council each year. Typically, these are dinner meetings held on the first Monday of each month with exceptions for summer and January. In order to ensure adequate food, reservations are required in advance. Information regarding the meetings is emailed (or mailed) to each member.

NEWS AND PERIODIC INFORMATION: A calendar/UPDATE and other information may be distributed at each monthly dinner. Newsletters are mailed to members twice a year. The Emeriti website provides up-to-date information.

VOLUNTEERS: Requests for Emeriti member volunteers to serve at campus or other events should be referred to the chair of the Emeriti Ambassadors.

FACILITIES: Requests by non-member groups to use the Emeriti Association facilities shall be brought to the Council for consideration. If approved, an agreement will be signed with a responsible representative of the organization making the request.

OFFICERS AND COMMITTEE CHAIRS: Each officer and committee chair shall update his/her job description yearly. Job descriptions are provided to each new officer or committee chair and made available to the nominating committee for use in contacting candidates.

The complete Emeriti Association Constitution, Bylaws, Policies and Procedures, and the History of the Association can be found on the Emeriti website.

CONTACT INFORMATION:

OSU EMERITI ASSOCIATION
ConocoPhillips Alumni Center, Suite 102
Oklahoma State University, Stillwater, OK 74078
Phone: 405-744-5263
E-mail: emeriti@okstate.edu
Website: <http://emeriti.okstate.edu>

EMERITI BENEFITS

Information regarding benefits is subject to change during the year. Please contact the appropriate agency or department for more information. Also, some departments or programs listed herein may have different rules for Emeriti Association members who are retired faculty and staff and those who were not retired from OSU.

Apple Computer Discounts: Academic discounts on Apple Computers are available at the Student Union Bookstore. A valid OSU ID must be shown at the time of purchase. For more information, contact the Bookstore at 405-744-4357.

Auditing Courses: Retirees may audit OSU courses (except Music, Art, or lab classes) at no cost. The instructor's permission is required to audit. Call the University Registrar for details: 405-744-6876.

Campus Parking Permits: Retired OSU employees with 20 years or more of service and 20 consecutive years of obtaining an OSU parking permit are entitled to receive an Emeritus parking permit at NO COST. The permit is obtained from the Transportation Center at the corner of Hall of Fame and Monroe. These permits must be renewed each year. Other retirees may obtain a day pass. Parking permits are valid ONLY for the personal use of the retirees to whom they are issued and cannot be loaned to students, friends, or family. Parking permits of deceased OSU retirees must be returned and may not be used by their widows/widowers. Call 405-744-4324.

Cohn Family Small Animal Shelter: The Cohn Shelter, located at 1407 N. Western, will board small animals of Emeriti as space allows. Call 405-744-3647 for information, daily fees, and directions.

Edmon Low Library: Retired faculty and staff may check out books, software and other permissible materials for 180 days. An OSU/Emeriti ID card is required. Also, Emeriti members may access digital library services through the internet at <http://library.okstate.edu/dls/>. For help, call the librarian at 405-744-9780.

Email: Retirees can keep their OSU email addresses. For questions regarding an O-Key account, contact the IT Help Desk at 405-744-4357.

ID Cards: While current OSU photo ID cards will remain valid in retirement, a new ID card can be obtained in 113 Math Science Building. Lost cards are to be reported immediately as they can, among other things, be used for purchases at the Library and the OSU Bookstore. There is a charge to replace lost cards. Call 405-744-8434 for more information.

Lake Carl Blackwell (LCB): There is no charge for day visitation for OSU Emeriti and spouses. A "day use" pass is required and can be acquired by showing an OSU Emeriti card at the LCB Headquarters (store) or the Fee Collection Booth. There are no longer any discounts on daily or annual boating or fishing permits. Vehicles not displaying a permit are subject to ticketing by OSU PD. Call 405-372-5157 for details.

OSU Music Department: With the exception of the Masterworks, all concerts tickets may be purchased by Emeriti members and senior citizens at the current student rate. For a list of upcoming events, check <http://music.okstate.edu> or call 405-744-8997.

OSU Sporting Events: Season tickets for OSU home games may be purchased by OSU retirees for the same discounted price that is offered to active faculty and staff. Retirees are limited to two tickets for men's basketball and four tickets for all other sports. When purchasing in person at the Athletic Ticket Office, retirees must present their OSU ID cards in order to receive the discount. If ordering by mail, they must include a photocopy of their ID cards. Call 405-744-5745 for details and ordering information.

OSU Theatre: Retired faculty and staff are eligible for season tickets at a reduced rate. For upcoming events, check <http://theatre.okstate.edu> or call 405-744-9208.

Parking in Student Union Garage: OSU Emeriti are provided a 50% discount on hourly parking in the SU garage with a minimum charge of one hour of parking at the current rate. Current Emeriti ID must be presented to the parking attendant to receive benefit.

Transit System: Citizens over the age of 60 may ride the local OSU orange buses one way for twenty-five cents. Currently, the Tulsa service is restricted to students and faculty.

University Club at Oklahoma State University: Emeriti members are eligible to join the University Club (U-Club). For details on U-Club membership, benefits, the event calendar and other information, visit the U-Club website at <http://uclub.okstate.edu> or send an email to uclub@okstate.edu.

Wellness Department: The University covers the membership fee for the Wellness Department (Colvin Recreation Center and Seretean Wellness Center) for faculty and staff who have retired from OSU. Retirees need only to show their University ID to be admitted.

HIGHLIGHTS OF 2016

OSU Emeriti Association

Anne Matoy, Association President

2016 continued to provide opportunities for the Emeriti Association to meet the organizational purpose of enhancing and encouraging the educational, professional, and social interactions among retirees at Oklahoma State University and to interact with other individuals and groups in ways that enhance the education and welfare of retired persons.

Accomplishments were not possible without the dedication and commitment of many individuals including the officers, council members, and committee chairs – many who have continued to serve the Association and members through years of service. Special thanks to Vickie Sturgeon and Jim Criswell, whose terms as council members expired this year, and to Sharon Brown who chaired the Ambassadors/Alumni Relations Committee for years.

The Emeriti Association's financial condition continues to be solid. As of December 31, 2016, there were balances of about \$7,200 in checking and \$23,300 in savings. The Association continues to subsidize the monthly dinner gatherings which are central Association activities.

We greatly appreciate the support of the Provost's Office which covers many of our expenses and provides administrative support through Misty Burk, the OLLI assistant. Misty is invaluable to our communications effort to stay in touch with members through the newsletter and monthly updates as well as handling monthly dinner reservations and other routine duties.

Our endowed scholarship fund with the OSU Foundation has an endowment value of \$25,600. Our other Foundation fund has a yearend endowment value of about \$35,400. Additional tax deductible contributions are always welcome, and we look forward to the time that we can award more than one scholarship a year.

The financial review conducted each year by a committee appointed by the Emeriti President has been favorably completed and approved by the Council.

We urge you to invite prospective members and let both recent and not so recent retirees know of our fun, fellowship, and continued opportunities for service. Unfortunately, during the year we lost several members as the list "In Memoriam" reflects.

Interest groups (Technology, Making the Most of Retirement, Armchair Travel Series, Investment Club) and travel opportunities continued to provide fun and fellowship opportunities and new avenues for continued learning. Our monthly dinner meetings provided programs that were both entertaining and educational. Meet and Greet before the monthly gatherings provided yet another way to make new friends and renew acquaintances with old ones.

Serving with the Ambassadors and on University and Faculty Committees provided an opportunity for service to the University and a means of keeping us informed of pertinent happenings around campus.

It has been my pleasure to serve as President during 2016 and I look forward to 2017 as a year in which we can continue to serve the University, the community and each other as Emeriti.



IN MEMORIAM

*Joan Barrick
John Bosworth
Ken Cox
Richard Danel
Loretta Fisher
Ramond Habiby
Christine Harris
Roberta Henderson
Leroy Howell
Mavis Jones
Steve Miller
Lavon Richardson
Grace Spivey-Smith
Vernon "Pete" Troxel*

*James Bellatti
Kay Bull
Beverly Crabtree
Martha Fischer
Dorothy Goss
Adelia Hanson
A. B. Harrison
Betty Howell
John Ives
Franklin Leach
Charles Platt
Donald Rose
Ada Whitley*

The OSU Emeriti Association is saddened by the loss of these members and former members in 2016 and extends condolences to family and friends.



**Oklahoma State University
OSU EMERITI ASSOCIATION
ConocoPhillips Alumni Center, Room 102
Stillwater OK 74078**

CHANGE SERVICE REQUESTED